

MARINA VIEW SCHOOL

Matatau mo te ao Learning for Life



NEWSLETTER

Tena koutou e te whanau, mihi nui ki a koutou katoa

Dear Parents & Caregivers,

ATTENDANCE

There are still many children who are continually coming to school late, or who are away unjustified for many days. Please note we will be following up with attendance on those students concerned. Please ensure your child is at school well before the 8:50am bell for the start of school.

Please also continue to inform the school if your child tests positive for Covid with details of when symptoms started and the date of the positive test result.

CORRECT UNIFORM

Please ensure your child/children are wearing correct Marina View School uniform as shown below in the photos. Intermediate students are to wear their blue shirts at all times, unless participating in P.E. All children should be wearing correct footwear which is black shoes (no brightly coloured laces). **Please note Crocs are not appropriate footwear and can be dangerous to wear at school.**

As the weather is colder now your child should have a named Marina View School jumper. If you need to order any new uniform items, this can be done online at:

<https://www.argyleonline.co.nz/shop/auckland/marina-view-school>

Please also ensure all children have a spare change of clothes in their bag, especially during winter months when they may get wet or muddy.



Kind Regards
Maurice Young
Principal

UPCOMING EVENTS

MAY

- 19th PINK SHIRT DAY
- 26th Y8 Massey High Open Morning
- 30th Y5/6 Parent Info Evening on Y7/8
- 31st Y7/8 Basketball Zones

JUNE

- 1st Y5/6 Ripa Rugby Zone Day
- 5th KINGS BIRTHDAY - SCHOOL CLOSED
- 6th TEACHER ONLY DAY
- 7th Class Photos
- 9th Y2 Trip to MOTAT
- 9th Y7/8 Table Tennis Zones
- 14th Individual & Sibling Photos
- 15th Individual & Sibling Photos
- 15th Year 5/6 Soccer Zone Day
- 16th Book Battle Competition
- 23rd Year 5/6 Trip to CATS Musical
- 26th Story Quest Incursion at MVS

Pink Shirt Day
Friday 19th May 2023



Gold Coin Donation
Go all out on the PINK!



Pet Doctors West Harbour

Your local Veterinary Clinic caring for your furry family member.
Get unlimited consultations, vaccines and more with our Best for Pet Plan.
Give us a call, or visit petdoctorswestharbour.co.nz to find out more.

09 416 6388

77 Hobsonville Road

westharbour@nzpetdoctors.co.nz



Marina View School
97-99 Marina View Drive,
West Harbour, Auckland, 0618

P (09) 417 0007
E office@marinaview.school.nz
W www.marinaview.school.nz

TERM 2 EXTRACURRICULAR ACTIVITY FEES

Y1	Team Scott	\$9.00
Y2	Team Ashford	\$28.00
Y3/4	Team van Beek	\$6.50
Y5/6	Team Oldham	\$30.00
Y7/8	Team O'Reilly-Dodd	\$15.00



A reminder that you can view your financials on your child's Hero page using your login to Hero.

NETBALL FEES

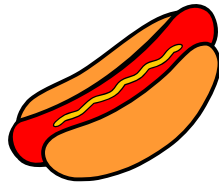
There are still a number of Netball fees outstanding and the season is now well underway. Please check your "Hero Financial Page" for any outstanding invoices and advise Kim Cowsill kcowsill@marinaview.school.nz if you wish any credit to be used against a particular invoice.

PINEHURST COURTS: \$95

TE PAI COURTS: \$120

AIMS NETBALL TEAM THANK YOU

Thanking you to all our families for supporting the AIMS Team with the hot dog and juicy fundraiser last week. We we will be holding another one on Friday 2nd June - more info to come.



LOST PROPERTY

We are still accumulating a large amount of lost property, including jumpers. If your child has lost a uniform item please email Kim Cowsill on kcowsill@marinaview.school.nz who will check if it has been handed in. **Please name ALL items that come to school so they can be returned if lost.**

THANK YOU

Thank you to the Veacock Family for their kind donation of a suitcase of fabric. This will be well received by our Intermediate Team for Technology and other activities.

THANK YOU

COMMUNITY NOTICES

WEST HARBOUR COMMUNITY PATROL SUPPORT SAFER PLATES EVENT

Safer Plates and Tool Engraving event will be held on Saturday 20th May 2023 from 9am until 12 noon at the Hobsonville Point Secondary School carpark. For the small cost of \$4 the team will change out the screws on your number plates to tamper resistant screws making it difficult for the number plate to be stolen unless special screw drivers are used. The change out only takes five minutes.

Free tool engraving. This is where your Drivers Licence number is engraved on your valuable tools. EG Electric drills, skill saws. The NZ Police always recommend that your drivers licence number is used as they can always return lost and stolen items by tracking down the owner by that number.

WARBIRDS ON PARADE

NZ Warbirds Airshow at Ardmore Airport Sunday 4th June. Commemorate D-Day and display of vintage, historic aircraft collection. Participants will include the NZ Defence Force in the promotion of career pathways. www.nzwarbirds.org.nz

CODING NZ LESSONS

Ages 9 - 18 years. Learn coding languages to create technology. Expert tutor online during lessons. 1 hour per week at 4pm, 5pm or 6pm. Try a FREE trial lesson at codingnz.com

PTA NEWS

WHITTAKER'S CHOCOLATE FUNDRAISER

Thank you so much to all our families who have sold their box, or multiple boxes of chocolates so far. There are two more weeks to sell as the campaign will finish Friday 2nd June.

If you have a box and are unable to sell the rest of it please return it to the school office as soon as possible.

To assist with money collection we ask that the money from the packs sold is transferred by internet banking to the school account if possible:

Electronic transfer details:

ASB Bank Westgate 12-3085-0091522-04

Particulars: Child's Name, Room No, Chocolates

Whittaker's
SINCE 1896



SPORTS

YEAR 7/8 FOOTBALL ZONES

On Tuesday 16th May, Marina View School participated in the North West Football Zones - a 9 aside tournament with boys and girls playing on the same day. The North West Sports Club organised the tournament, providing a full day of games.

Both our boys and girls teams played some very good football and the improvement of both teams throughout the day was noticeable. Our boys team finished in a credible 4th place, and our girls team finished 6th. As always our teams would not be taking part in these zone tournaments without the help of our parents who provide transport and support on the day, so thank you very much to those parents. Special thanks to Junior Fernandes for coaching the boys team throughout the day, and Michelle Buckley for managing the girls team so I could be a part of both teams during the day.

Rhonda Sowter



WRITERS FESTIVAL

On Tuesday 16th May, 26 Year 7 & 8 students and 11 Year 5 & 6 students went to the Auckland Writer's Festival at Aotea Centre. We heard writer's from Australia, USA & NZ talk about their books and what led them to become writers. It was a great day and we were very inspired.



Author is James Russell from Auckland, who wrote The Dragon Brothers & Dragon Defenders series



**AUCKLAND
WRITERS
FESTIVAL**

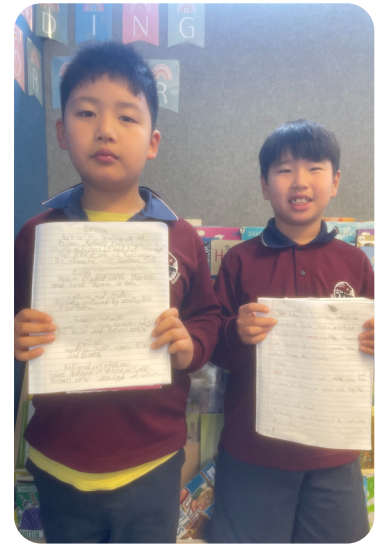
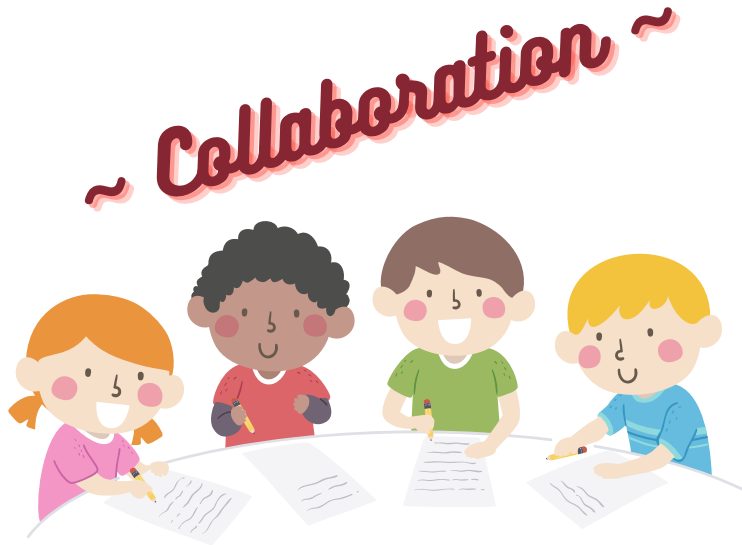
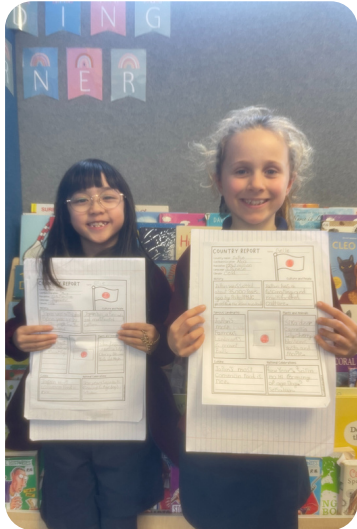


MARINA VIEW SCHOOL MAUNGA MOMENT

Whaia te iti kahurangi ki te tūohu koe me he maunga teitei
Seek the treasure you value most dearly: if you bow your head, let it be to a lofty mountain

Room 12 ~ Maunga Moment ~

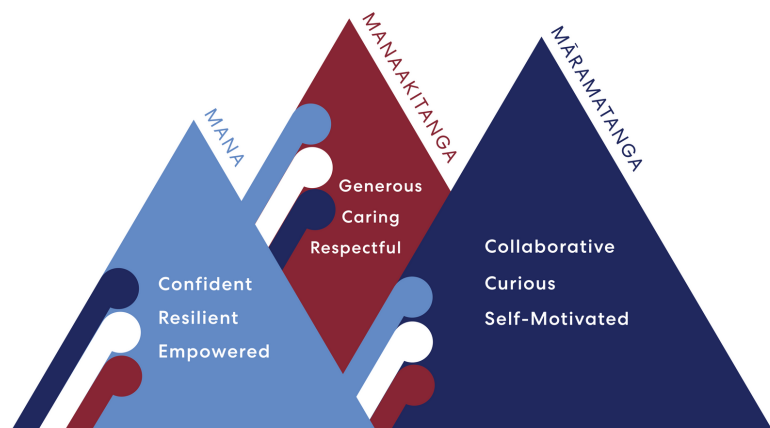
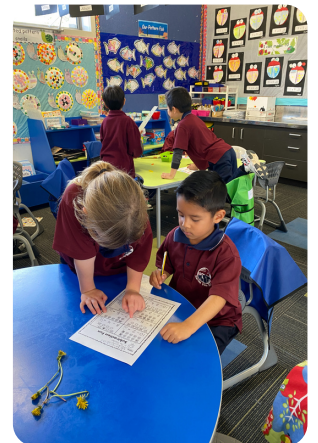
In Room 12 we have been looking at the Maunga disposition of 'Collaboration' under the Māramatanga mountain. We have been working on Information Reports for Writing. With a buddy we have worked together to research, plan and write our information reports. Miss Parkinson chose our buddy that we would be working with. We have enjoyed working with other people who we wouldn't normally work with!



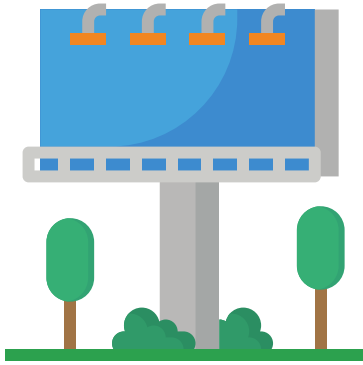
Room 3 ~ Maunga Moment ~

This is how we show Manaakitanga in Room 3:

- We share
- We work together
- We help other people
- We look after others
- We tidy out classroom
- We are kind
- We respect each other



NEW ELECTRONIC SIGN INSTALLATION



ROAD SAFETY REMINDERS

We would like to remind everyone about the safety in and around our school car parks and crossing. Please do not park across or in driveways along Marina View Drive and Picasso Drive. We continue to see people parking on the yellow lines at the exit to the carpark across the road - it is illegal to park on yellow lines, and is very dangerous as cars exiting the carpark cannot see clearly.

We request that cars exiting the carpark across the road from school consider not turning right during peak drop off and pick up times, to avoid the grid-locked situation that we often get. Please turn left, go up Marina View Drive, and use one of the side roads to safety turn around if need be.

Please also note that the hall carpark is for the use of staff vehicles - please do not park in here to drop off or pick up your children before or after school.



Thank you for your cooperation to keep our school community safe.





Kids K'Nction

**Before and After School Care
and Holiday Programmes**

Spaces available for before and after school care.

Onsite at Marina View School.

To find out more information or to book contact **Sachin on 021 832 181**, email kidsknection@outlook.com or fill in an enrolment form online at www.kidsknection.com

JOIN US

Realistic®
Art Academy Love to Draw

FANTASTIC REALISTIC ART CLASSES for Kids Ages 6-13

NOW BOOKING FOR TERM 2!

WHERE: ESOL Room, Marina View School

WHEN:

- ✓ Tuesdays (4pm, 5pm)
- ✓ Thursdays (4pm, 5pm)
- ✓ Fridays (4pm, 5pm)

Book online now!

ArtAcademy.co.nz
Ph: 021 151 0115
E: maya@artacademy.co.nz



