

MARINA VIEW SCHOOL

Matatau mo te ao Learning for Life



NEWSLETTER

Tena koutou e te whanau, mihi nui ki a koutou katoa

Dear Parents & Caregivers,

WELCOME TO THE 2025 SCHOOL YEAR

Welcome to all the whānau and children who are new to our school in 2025. I am sure that you will have a wonderful time at Marina View School, and I look forward to meeting you during the year.

I hope that the holidays were relaxing and enjoyable family times for you all.

Welcome to our new teachers; Peng Zou (Room Tahī Rua), Emma Waldegrave (Room 6), Janine Kolkman (Room 22), Carolyn Franklin (Room 23) and Sharee Harkness who will be taking Music this year.

We are enjoying seeing all the children's smiling faces, and hearing about the things they have been doing over the holidays. Our children look excited to be back at school and already there is a positive energy around with a buzz of activity throughout the school.

Best wishes for a settled and sunny 2025.

MEET THE TEACHER AFTERNOON

Next week and Week 4 our teaching teams will be having a 'Meet the Teacher' afternoon. These meetings are an opportunity for you to meet your child's teacher and the rest of the team. It's also a chance to find out about the learning programmes and ask any questions that you may have. Please see below for dates and times for these meetings:

Monday 17th February

Year 1 - 3:30pm in Room 4
Year 2 - 3:30pm in Room 7

Thursday 20th February

Year 5/6 - 3:30pm in Room 18

Tuesday 25th February

Year 3/4 - 3:15pm in Room 11
Year 7/8 - 3:45pm in Room 23/24

NEW ENTRANTS STARTING THIS YEAR

If you live in zone, and have a 4 year old who is turning 5 and due to start school in this year, please ensure you let the office know as soon as possible, so your child can be added to our pre-enrolment book. This information helps us to know our staffing needs.

UNIFORMS

Please ensure your children are wearing appropriate uniform for the hot weather such as short sleeve Marina View School t-shirt and shorts. We are seeing some children who are wearing too many layers which can cause overheating, blood noses etc.

A reminder also that appropriate footwear should be worn at school, sandals with a back strap, or black sneakers. Please note Crocs and slides are not appropriate footwear for school.

Kind regards,
Maurice Young
Principal

UPCOMING EVENTS

FEBRUARY

- 14th Mihi Whakatau in the Gym 10:15
- 17th Road Patrol Refresher Training 9am
- 17th Y1 & Y2 Meet the Teacher Afternoon
- 20th Y5/6 Meet the Teacher Afternoon
- 25th Y3/4 Meet the Teacher Afternoon
- Y7/8 Meet the Teacher Afternoon
- 25th Y6/7/8 Swimming Zones Trials
- 26th Y7/8 Tag Zones

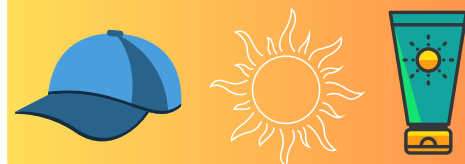
MARCH

- 4th Y5/6 Tee Ball Zones
- 6th Y7 Boostrix Immunisations
- 6th Y8 HPV Immunisations
- 6th Y7/8 Softball Zones
- 10th Senior Athletics Day (Y5-8)
- 11th Y7/8 Cricket Zones
- 17th Y6/7/8 Swimming Zones Day
- 20th BOOK FAIR
- 20th Goal Setting Meetings 1pm - 7:30pm
- School closes at 12:30pm

SUNSCREEN & HAT REMINDER

A reminder to please apply sunscreen to your child before coming to school during these hot summer months.

Hats are also compulsory and must be worn at break times.



Pet Doctors West Harbour

Your local Veterinary Clinic caring for your furry family member.
Get unlimited consultations, vaccines and more with our Best for Pet Plan.
Give us a call, or visit petdoctorswestharbour.co.nz to find out more.

09 416 6388

77 Hobsonville Road

westharbour@nzpetdoctors.co.nz



SCHOOL DONATIONS

To maintain the high standard of facilities and educational opportunities Marina View offers, it is necessary to supplement the grant we receive from the Ministry of Education, by way of a voluntary school donation and fees for extracurricular activities. This financial support from the community allows our school to provide the best possible educational experiences for our students.

The 2025 donation amount is \$200 per year, per student.

Payments can be made through your child's HERO account (financial page) or by payment at the school office.

Please note that the donation is eligible for a 33% tax rebate, if paid before 31st March, and can be claimed in the current tax year.

Any queries with regards to payment or notification of electronic payments, please email Kim Cowsill on kcowsill@marinaview.school.nz or phone 417-0007 ext 710.

A reminder that you can view your financials on your child's Hero page using your login to Hero.

SCHOOL HATS

School hats are compulsory for Term 1. MVS caps and bucket hats can be purchased online at:

<https://www.argyleonline.co.nz/shop/auckland/marina-view-school>

or the office, and are \$20 each. **Please ensure your child's hat is named clearly.**



LUNCH ORDERS

Lunch orders are available Mondays and Thursdays:

MONDAY – PIZZA

THURSDAY – SUBWAY

FRIDAY – SUSHI

Order before 9:00 am on day of delivery. To order please register an account at www.lunchonline.co.nz and click on 'Login' then 'Create an Account'.



ABSENCES

If your child will be absent from school, please notify the school by submitting an absence on our school website www.marinaview.school.nz. If we do not receive an explanation we will send a SMS text message to the first contact. Thank you for your cooperation, your child's safety is our priority.



BOOK FAIR GARDEN

Catch the reading bug!

Thursday 20th March
Held in Room 10

Come stroll
through our
Book Fair Garden!



LUCKY BOOK CLUB ORDERS

Orders for the latest Lucky Book Club issue will close on Wednesday **19th February**. A reminder you can place your orders online at:

<https://mybookclub.scholastic.co.nz/Parent/Login.aspx>
Orders will be delivered to school then distributed to classrooms/children.

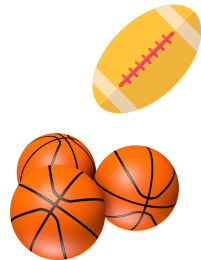
 SCHOLASTIC

Lucky Book Club



TOUCH & BASKETBALL FEES

Please note Touch fees are now due. Please check your "Hero Financial Page" for any outstanding invoices and advise Kim Cowsill on kcowsill@marinaview.school.nz if you wish any credit to be used against a particular invoice.



CHANGE OF CONTACT DETAILS

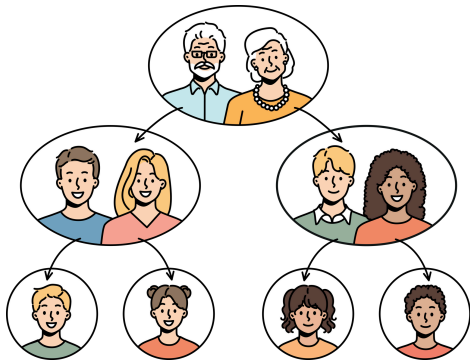
If your child's contact details need updating with new contact phone numbers, address, or email address please email office@marinaview.school.nz so we can update our records.



YEAR 7 & 8 TECH

The Intermediate students are researching their family history - making a family tree and a family crest in tech this term with Mr Gover. They are also using Pixton to create an avatar of themselves and their family to make a comic book about their family. The students had heaps of fun this week getting the exact looking avatars for their parents and siblings so look out for a great comic book about your family coming soon!

Mr Gover



My Family

YEAR 7 & 8 FOOD TECH

This week, the Intermediate students have started food technology, making a yummy chocolate weetbix slice. They did a great job and can now hopefully make some for their families at home to enjoy!



MARINA VIEW SCHOOL MAUNGA MOMENT

Whaia te iti kahurangi ki te tūohu koe me he maunga teitei
Seek the treasure you value most dearly: if you bow your head, let it be to a lofty mountain

Room 29 ~ Maunga Moment ~

Room 29 began 2025 by taking part in several whakawhanaungatanga activities to build relationships and get to know our new classmates. One of these activities was the "If I Were a Balloon Animal" challenge, where we took on the task of learning something new while also sharing something about ourselves. It was a fun and engaging experience, filled with laughter and creativity, but it also helped us develop important dispositions—resilience, through perseverance when faced with challenges, and collaboration, by supporting and encouraging each other to succeed. Through this activity, we not only strengthened our teamwork skills but also built a sense of trust and connection that will carry through the rest of the year.



~Resilience~

~Collaboration~

Team Year 7/8

Team Year 7/8 have started the year thinking about, and furthering our understanding of, how our Maunga dispositions are important beyond the classroom too. Whether we are in the hall for assemblies or during break times in the playground, we show respect, teamwork, and perseverance by listening, including others, and solving problems positively. By using these skills throughout the school day, we help create a supportive and connected learning environment where everyone can feel valued and succeed.

OUR MAUNGA - IN THE HALL

MANAAKITANGA

We enter and exit the Hall quickly & quietly.
 We respect the Hall equipment.
 We listen to people speaking.
 We leave the space clean and tidy.

OUR MAUNGA - AT BREAK TIMES

MANA

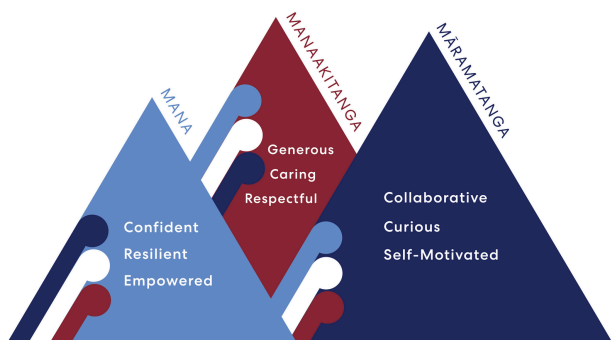
We include others.
 We respect our school rules.
 We keep our school clean.
 We respect school property.

MANAAKI MAI

I play in the correct places.
 I wear my hat in Terms 1 & 4.
 I keep myself safe.
 I get back to class before or when the bell rings.

MANAAKI ATU

I show good sportsmanship.
 I solve conflicts with my words.
 My actions are considerate of others.
 I use respectful communication.



ROAD CROSSING & CARPARK SAFETY

Please note some reminders below to ensure our children are safe during school drop off and pick up times.

- 1.) Please ensure you use the patrolled crossing morning and afternoon.
 - 1.) 请确保早晨和下午都使用巡逻道口
 - 1.) 아침과 오후에 건널목을 이용해 주세요
- 2.) Do not drop children off in the middle of road while waiting at the crossing.
 - 2.) 等待过马路时, 请不要在马路中间将孩子放下。
 - 2.) 차로 운전중 학교앞 건널목에서 기다리실때 자녀분을 길중간에 내려주시면 안됩니다.
- 3.) Students should exit and enter the car from a footpath side door of a parked car.
 - 3.) 车停下后, 学生请使用靠近人行道的一侧车门上下车。
 - 3.) 학생들은 주차 된 차량의 보도 옆 문을 통해 차를 내리고 타야합니다.
- 4.) Parking on the yellow lines is dangerous and against the law.
 - 3.) 停在黄线上是非常危险且违法的
 - 4.) 노란점선이 있는곳에 차를세우는것은 위험하며 불법입니다
- 5.) Parents/caregivers dropping off or picking up their children are not permitted to use the staff car parks beside the administration block.
 - 5.) 家长或看护人接送孩子时, 不允许使用行政楼旁的员工停车场。
 - 5.) 자녀를 내려주거나 데리러 오는 부모님들은 학교오피스 옆에있는 직원 주차장을 이용할 수 없습니다.
- 6.) Do not use the hall staff carpark to drop off or pick up children before and after school.
 - 6.) 上学前或放学后, 请勿使用礼堂侧的教职工停车场接送孩子。
 - 6.) 자녀분을 등교시킬때 그리고 방과후 데리러 오실때, 학교 홀의 직원 전용 주차장을 사용하시면 안됩니다.
- 7.) Please use the footpaths provided into school and do not walk through the carparks.
 - 7.) 请使用学校划定的人行道, 不在停车场内穿梭。
 - 7.) 학교에 들어올때 연결된 보도를 사용하고 주차장을 통과해 걷지 마십시오.



WEST HARBOUR TENNIS CLUB
OPEN DAY
 10am-12pm
 Sunday 16th February

- FREE Family Fun Event
- Tennis Coaching and Drills
- Equipment provided
- Have a go at Tennis and Pickleball
- Free Sausage Sizzle
- Now is a great time to take up Tennis!

Picasso Reserve, West Harbour

Realisticus
 Art Academy Love to Draw
FANTASTIC REALISTIC ART CLASSES for Kids Ages 6-13

JOIN US TODAY!

Where: Old ESOL Room, Marina View School

Class times:
Tuesdays (3:30pm / 4:30pm)
Thursdays (3:30pm / 4:30pm)
Fridays (3:30pm / 4:30pm)

Join our Sketch Club (BEST for older kids)

Book online now!
 ArtAcademy.co.nz

Ph: 021 151 0115
 E: maya@artacademy.co.nz

Kids K'Nection
 Before and After School Care and Holiday Programmes

Spaces available for before and after school care.
 Onsite at Marina View School.

To find out more information or to book contact **Sachin on 021 832 181**, email kidsknection@outlook.com or fill in an enrolment form online at www.kidsknection.com

Let's DANCE!

cameronballet.co.nz

Enrolments Now Open!

