



# Marina View School NEWSLETTER



97-99 Marina View Drive  
West Harbour, Auckland  
Phone: 417 0007

Web: [www.marinav.school.nz](http://www.marinav.school.nz)

Kia Ora, Annyong Hesayo, Ni Men Hao, Namaste, Talofa, Ni Sa Bula, Buenos Dias, Goedendag Greetings!

**Tena koutou e te whanau, mihi nui ki a koutou katoa.**

Dear Parents and Caregivers,

## GOAL SETTING MEETINGS - THURSDAY 22nd MARCH 2018 - 1.00PM—8.00PM

Keep Thursday 22nd March free for a get together with children, parents and teachers to look at some initial learning goals for 2018. Have a chat at home about what a good goal might be (maybe look at last year's report to help with this). **School will finish at 12.30pm on this day, and children will need to be picked up at this time so that their teachers can start their interviews on time. Interviews will be 10 minutes duration.** Kids' K'nection will be open from 12.30pm until 6.00pm this day. Please phone Carol Plewinski on 021 832 181 or 415 8321 or email [cplewinski@xtra.co.nz](mailto:cplewinski@xtra.co.nz) if you want to know more.

For online bookings, please go to [www.schoolinterviews.co.nz](http://www.schoolinterviews.co.nz) to make your booking.

**The school event code is m6868 . We look forward to meeting with you. A letter has also been sent home to families.**

## TEACHER ONLY DAY 29TH MARCH:

Please note we will be having a Teachers' Only Day on **Thursday 29th March**. Teachers from all 10 schools in our Community of Learning will be gathering at Hobsonville Point Secondary School for professional development. This is the day before Easter Holidays. A reminder that school is also closed on Friday 30th March, Monday 2nd April and Tuesday 3rd April for Easter. A reminder will be sent out again closer to the time. Thank you for your understanding.

Kids K'nection Ltd will be open for the Thursday 29th March and Tuesday 3rd April and have very limited spaces available for children that need care on these days. Please contact Carol on [cplewinski@xtra.co.nz](mailto:cplewinski@xtra.co.nz) for bookings.

## SCHOOL UNIFORM REMINDERS:

Please ensure ALL items of your child's school uniform is named clearly.

**GIRLS:** Please ensure the correct uniform is worn at all times, for girls this is a skort or skirt, not the MVS Cheerleading skirts.

**SPARE UNIFORM:** If possible, we ask that students, particularly in the junior school, have a change of clothes in their bag.

## BASIC ROAD CROSSING SAFETY:

1.) Please ensure you use the patrolled crossing morning and afternoon.

1) 请确保早晨和下午都使用巡逻道口

1) 아침과 오후에 건널목을 이용해 주세요

2.) Parking on the yellow lines is dangerous and against the law

2) 停在黄线上是非常危险且违法的

2) 노란점선이 있는곳에 차를세우는것은 위험하며 불법입니다

3.) Crossing outside of the patrolled crossing is very dangerous

3) 在巡逻道口外过马路非常危险

3) 건널목이 아닌곳에서 길을건너는것은 매우 위험합니다

4.) **CHILD SAFETY FOR ALL IS IMPORTANT AT MVS**

4) 在MVS, 孩子的安全对所有人来说都是最重要的

4) 학생들의 안전이 가장중요합니다

Kind Regards , Maurice Young (Principal)

## SENIOR ATHLETICS REMINDER Y5-8 FRIDAY 16TH MARCH

*Please wear your house colours to support your house team:*

HOUSE COLOURS: Surnames beginning with:

**A-F = Green, Earth**

**G-K = Red, Fire**

**L-P = Blue, Water**

**Q-Z = Yellow, Air**



## BRUCE WALDOCK and EE-HENG LIM

provide empathy & excellence in small animal care at  
WEST HARBOUR VET CLINIC

77 Hobsonville Road - West Harbour ( near motorway)

PHONE: 416-6388 Website: [www.westharbourvets.co.nz](http://www.westharbourvets.co.nz)



## COMING EVENTS

### MARCH

- 9 Y2 Team Challenge Afternoon
- 13 T-Ball Zones/ Softball Zones
- 15 Y7 Activity Wk & Y8 Camp Meetings
- 15 Trip to Maritime Museum R14 & 34
- 16 Trip to Maritime Museum R9 & 10
- 16 Senior Athletics Day
- 22 Students, Parent and Teacher Goal Setting Meetings 1-8pm  
(school will close at 12.30pm on this day)
- 23 Tennis Zones
- 27 Swimming Zones
- 29 TEACHER ONLY DAY— School Closed
- 30 Good Friday—School Closed

### APRIL

- 2 Easter Monday—School Closed
- 3 EASTER Tuesday—School Closed
- 9-13 Y8 Camp & Y7 Activity Week
- 13th END OF TERM 1 @ 2.15pm
- 30th TERM 2 BEGINS @ 8:50am

### ABSENCES

If your child will be absent from school, please notify the school by emailing or phone: Ph:417-0007 (dial 1 to leave a message). **The message should state your child's name, room number, and reason for absence.** If we do not receive an explanation we will send a SMS text message to the first contact. Thank you for your cooperation, your child's safety is our priority.



**Scholastic  
Wild West  
Book Fair**  
Room 11

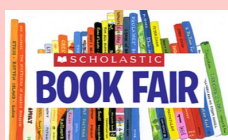
**Tuesday 20th March**  
8.00am—9.00am & 3.00pm - 4.00pm

**Wednesday 21st March**  
8.00am—9.00am & 3.00pm - 4.00pm

**Thursday 22nd March**  
1.00pm - 7.30pm

Come and look at the wide range of books available to purchase. The more you spend, the more new books we will get for our Library.

**Our BIG RED friend and GREEN MOUSEY friends will be visiting!**



## SCHOOL EVENTS

### 2018 SCHOOL DONATION

Children	Full Year	Full Pmt by 29 March 2018
1 child	\$200	\$180
2 children	\$360	\$324
3 children	\$450	\$405
4 children	\$520	\$468

*Please keep your school donation receipts for taxation purposes.*

### ACTIVITY FEES — TERM 1

Y1 Team One	N/A
Y2 Team Ashford:	\$5.00
Y3 Team Saunders:	\$5.00
Y4 Team Broadhurst:	\$22.00
Y5 Team Moore:	\$260.00 (Camp)
Y6 Team Oldham:	\$20.00
Y7/8 Team Buckley:	\$18.00

### CAMP/ACTIVITY WEEK FEES

**Year 8 Camp:**  
\$390 due by Friday 16th March.

**Year 7 Activity Week:**  
\$130 due by Monday 19th March.

### HOCKEY REGISTRATIONS ARE NOW DUE

For any queries about Hockey please email Mrs Lydiard on [rydiard@marinav.school.nz](mailto:rydiard@marinav.school.nz)



**A reminder to parents, please ensure that you put any money in a NAMED envelope, together with the remittance slip, and give to the class teacher.**



Some of our FLS students donated food parcels to the Westgate Salvation Army, which they had planned for in their Inquiry unit this term.



## NOTICES

### COMMUNITY NOTICES

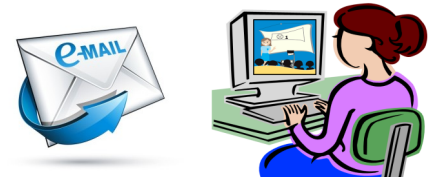
#### LISTON COLLEGE OPEN EVENING

Wednesday 28th March, 7.00pm—9.00pm.  
Interested parents and children can view the facilities and displays and earn of the opportunities offered to young men in Years 7-13. The evening will commence in the Gymnasium with a welcome by the Principal at 7.00pm. For further info phone: (09) 838 9350.

### COMMUNICATON TO FAMILIES



Most of our correspondence is now done through email from our new Student Management System called **Linc-ed**. If you are not receiving emails from the school with notices please let the office know so we can check your details and ensure we have your correct email. Please also check your spam inbox in case our messages are ending up there. The message line will read: **'Message From ..... (name of office staff)'**. There are occasions where hard copies will be sent home from time to time.



Are you looking for a Christian Community Based childcare centre for your child? West Harbour Christian Kindergarten, situated at 145 Moire Road, can offer ...

- Monday to Friday care all through the year, closing for only 2 weeks at Christmas.
- Fully qualified and experienced teachers.
- A programme based on development of Christian values.
- Children between the ages of 2-5 years can attend.
- Free 20 hours available
- Sessions to suit your needs – Full Days 8:30am—3:30pm, Mornings 8:30am—12:30pm, Afternoons, 12:30pm -3:30pm.

Contact Liz or Rosita, Monday — Friday, 8:00am - 4:00pm  
Phone: (09) 416-8091 or Email: [info@whck.org.nz](mailto:info@whck.org.nz)



Chinese Zither(Gu Zheng) Instrument Music Studio

古筝郭老师, 拥有40年以上专业古筝教学经验, 精品私塾教学  
多次参加国家级、省级各类比赛, 均取得了优异的成绩。多年教学经验形成了自己独特的教学方法和模式。培养了大量的学生考上了专业院校并且在各类比赛中获奖。本人也多次被国家教育部授予“优秀园丁”称号。

Mob: 027 514 3917 ( Kiko)  
Add: 20 Vermeer Pl. West Harbour





**YEAR 5 CAMP — CAREY PARK**  
**26th — 28th February 2018**

Thanks to everyone who helped make the Year 5 Camp at Carey Park a real special one. We had 24 amazing parents who encouraged and supported our students to display resilience, determination and team work. Much appreciated, Year 5 Teachers.

