

Issue 5 • 28th May 2020

# MARINA VIEW SCHOOL

## NEWSLETTER



*Whaia te iti kahurangi ki te tūohu koe me he maunga teitei*

*Seek the treasure you value most dearly: if you bow your head, let it be to a lofty mountain*

### **Tena koutou e te whanau, mihi nui ki a koutou katoa**

To Our School Community,

We would like to thank our school community for your understanding and support of our school's processes and practices that have been implemented thus far as we returned to school under Level 2.

Thanks also to our teachers and staff for the positive, proactive and professional way they are adjusting to these changing and challenging times.

We are continuing to follow health & safety guidelines from the Ministry of Health and the Ministry of Education and continuing with good hygiene practices. A reminder to ensure the wellbeing of all, children and staff should stay at home if they are sick. Any people presenting with symptoms of sickness at school (students or staff) will be asked to return home and contact their doctor if necessary.

### **UPGRADE OF STUDENT MANAGEMENT SYSTEM**

Last week we launched the upgrade to our student management, school reporting and communication system, now called **Hero**.

Click <https://hero.linc-ed.com/parents/> for Hero login instructions.

Hero enables you to keep up-to-date with all school communication through a modern computer browser or through the app, as well as ongoing access to information regarding your child's learning. All the rich learning content from LINC-ED for your child/children has been migrated to Hero and our school is working closely with the team at LINC-ED throughout this process.

If you need any additional help, feel welcome to email [jdyet@marinaview.school.nz](mailto:jdyet@marinaview.school.nz)



### **LATE STUDENTS AND DROP OFF/PICK UP SAFETY**

A reminder that school starts (for Years 2 - 8) at 8:50am. Please ensure your child arrives before this time so they can get settled in class.

Please also be mindful of the school carpark and crossings during drop off and pick up times - please use the paths provided and do not walk through or wait in the carparks. Please use the carpark opposite the school to safely park when dropping off or picking up children.



Kind Regards  
Maurice Young  
Principal

### **UPCOMING EVENTS**

#### **JUNE**

- 1st QUEEN'S BIRTHDAY - School Closed
- 10th Photolife Class Photos
- 17th Photolife Individual & Sibling Photos
- 18th Photolife Individual & Sibling Photos

#### **JULY**

- 3rd Term 2 Ends @ 2:15pm
- 20th Term 3 Begins @ 8:50am

### **Weekly attendance collection for COVID-19 period**

We will be sending student attendance data to the Ministry weekly, from Friday 29th May. The purpose is to

- Report to the National Crisis Monitoring Centre and government on levels of attendance during the COVID-19 period
- Inform and support Ministry planning for students and schools returning to normal operation, and
- Evaluate and report on the effectiveness of initiatives implemented by the Ministry to respond and manage its response to COVID-19.



### **Pet Doctors West Harbour**

Your local Veterinary Clinic caring for your furry family member.  
Get unlimited consultations, vaccines and more with our Best for Pet Plan.  
Give us a call, or visit [petdoctorswestharbour.co.nz](http://petdoctorswestharbour.co.nz) to find out more.

09 416 6388

77 Hobsonville Road

[westharbour@nzpetdoctors.co.nz](mailto:westharbour@nzpetdoctors.co.nz)



## PHOTOLIFE

On Wednesday 10th June Photolife will be taking class photos. Please ensure your child/children wear correct full school uniform on this day (no bright hair accessories or shoes). A flyer will come home with more information. The following week on Wednesday 17th/Thursday 18th June will be Individual and Sibling Photos.

## LIBRARY OPEN NEXT WEEK

The library will be open for business again on Tuesday 2 June. All books are due back by Friday 5 June, so please hunt out any books that may have snuck under the bed during lockdown. If you'd like to see what books we have in our library, have a look at our online catalogue:

<https://marinaview.athenaeum.nz>

Here are some of our new books....



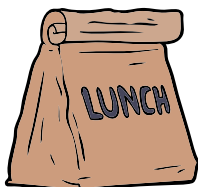
## WINTER UNIFORM

As the weather is becoming colder, please ensure your child is dressed accordingly, and is in correct uniform. Only MVS school jumpers to be worn and please ensure your child/children have black shoes. **Please also ensure all children have a spare change of clothes in their bag.**

## LUNCH ORDERS

### The Munch Box

Available three days this term, Monday, Wednesday & Friday. Menus have been sent home and available on school website or Facebook page MVS Munch Box



## THANK YOU DOMINOS PIZZA

A big thank you to Dominos Hobsonville for generously supplying our staff with pizza on Monday, we appreciate the kind gesture.



## CHANGE OF CONTACT DETAILS

If your child's contact details need updating with new contact phone numbers, address, or email address please email [office@marinaview.school.nz](mailto:office@marinaview.school.nz) so we can update our records.



## COMMUNITY NOTICES

### MCLEARY WORKSHOPS - LEARN TO DRAW CARTOONS

Online cartooning school for primary school children.

Free for a limited time. Contact: [thedstudio@gmail.com](mailto:thedstudio@gmail.com) / 022 139 5149

[www.mclearyworkshops.co.nz/special](http://www.mclearyworkshops.co.nz/special)

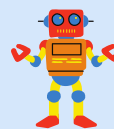
### NORTH WEST TOY LIBRARY - TOY LIBRARIAN WANTED

Part time role, 8-10 hours per week term time only.

Tasks include opening/closing library, operating MiBase system, administrative tasks, interaction with members

For more info email [northwesttoylibrary@gmail.com](mailto:northwesttoylibrary@gmail.com)

Applications close 30th May 2020.



**Come on kids  
- together we can  
reduce our water use!**

Auckland is experiencing a drought and we have received less than half of our usual rainfall. We need you to use 20 litres less water, every day. That's about two buckets of water each!



**Turn the tap off as soon as you've washed your hands.**



**Wash your paint brushes in a bucket or ice cream container of water instead of under a running tap.**



**If you see water leaking anywhere at school, tell your teacher.**

Visit [watercare.co.nz](http://watercare.co.nz)  
for more ways to reduce your water use

**Watercare**  
An Auckland Council Organisation



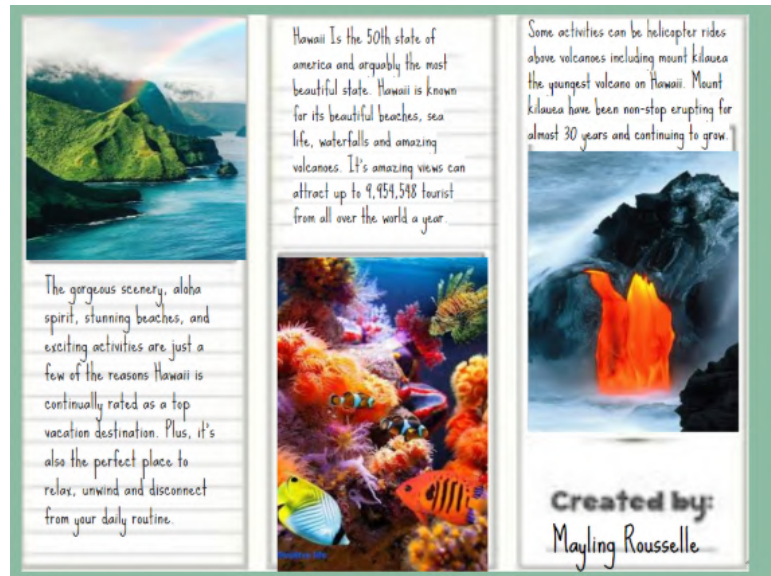
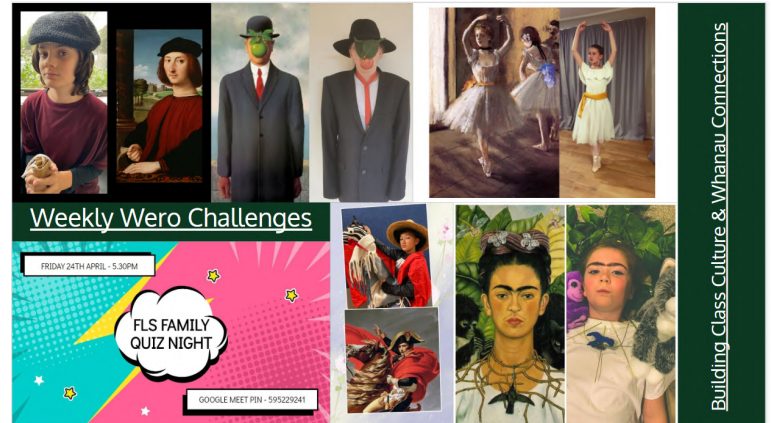
## TIDY TECH KIWI

Bring in all your unused technology and all associated cables and chargers as part of the HP Tidy Teach Kiwi Programme.





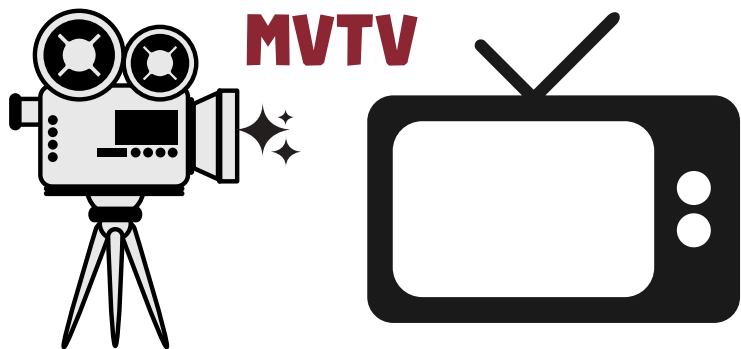
Here are some highlights from some of the students' remote learning during the lockdown period, some great work from our Year 7/8 team!



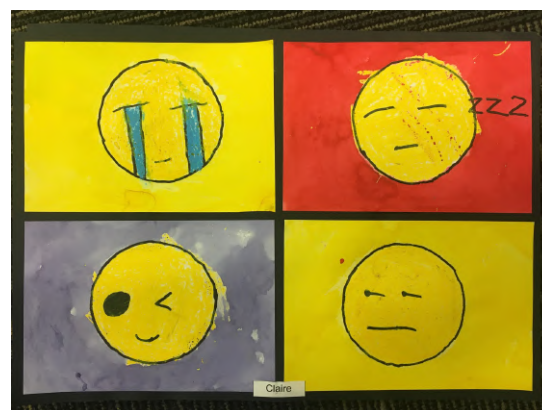
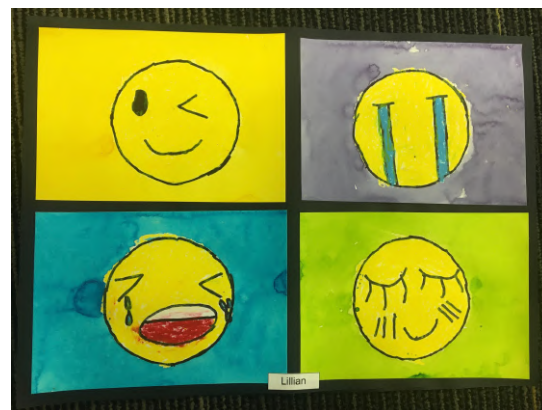


## MVTV IS BACK

MVTV is back!! The crew were very excited to be back this week putting together the shows.



## YEAR 2 EMOJI ART



**Rachael Lelean**  
DIRECTOR  
Rodney West Franchise for

**G.J. Gardner. HOMES**  
New Zealand's favourite home builders

d (09) 412 2744 m (027) 412 8917  
e rachael.lelean@gjgardner.co.nz

**Matt Lelean**  
FRANCHISE OWNER  
Rodney West Franchise for

**G.J. Gardner. HOMES**  
New Zealand's most trusted home builder

d (09) 412 2741 m (027) 838 7128  
e matt.lelean@gjgardner.co.nz

APPLE SEEDS

### PRIVATE TUTORING

- Does your child need a some extra tuition?
- Are they struggling to engage with work at home?
- Do they need extension or learning support in areas of Reading, Writing, Math or Music?

Preliminary consultation **FREE**  
\$22 per 1/2 hour  
\$40 per hour

**For help from a fully-registered primary teacher contact:**  
0277738465  
andrew.rush91@gmail.com

**Kids K'Nnection**  
Before and After School Care and Holiday Programmes

**Spaces available for before and after school care.**  
**Onsite at Marina View School.**

**To find out more information or to book contact Carol 021 832 181 or fill in an enrolment form online at [www.kidsknection.com](http://www.kidsknection.com)**