

Issue 2 • 25th February 2021



MARINA VIEW SCHOOL

NEWSLETTER

Whaia te iti kahurangi ki te tūohu koe me he maunga teitei

Seek the treasure you value most dearly: if you bow your head, let it be to a lofty mountain

Tena koutou e te whanau, mihi nui ki a koutou katoa

Dear Parents & Caregivers,

HEALTH REMINDER - COVID -19 LEVEL 1

Thank you to all our Parents & Caregivers for your flexibility with the later drop off times during Alert Level 2. These staggered times have worked well to ease congestion before and after school. Now we are in Alert Level 1, normal school hours have resumed so a reminder that all students need to arrive at school before 8:50am, to ensure they are settled in class before the bell for the start of school. Please ensure children are picked up promptly at the end of the day at 3pm.

We are continuing to follow Covid-19 Level 1 health & safety guidelines from the Ministry of Health and the Ministry of Education and continuing with good hygiene practices. A reminder to ensure the wellbeing of all, children and staff should stay at home if they are feeling unwell (coughing, sneezing, runny nose, headache etc). Any people presenting with symptoms of sickness at school (students or staff) will be asked to return home and contact their doctor if necessary.

GOAL SETTING MEETINGS: THURSDAY 25TH MARCH

Keep Thursday 25th March free for a get together with your child and teacher to look at some learning goals for the year ahead. School will finish at 12:30pm this day and meeting times will be from 1:00pm through to 7:20pm. More information and booking code for times to follow shortly.

NEW ENTRANTS STARTING IN 2021

If you have a child or know of any children who will be starting at Marina View School in 2021, we ask that you please notify the school office as soon as possible to assist with our planning. Thank you.

MEET THE TEACHER AFTERNOON

Thank you to those parents who were able to join their children's teachers for the Zoom Meetings which took place this week and last, in place of our face to face 'Meet the Teacher' afternoons. We thank you for taking the time to come along, and hope you got some valuable information from the meetings.

Kind Regards
Maurice Young
Principal

UPCOMING EVENTS

FEBRUARY

26th Y7/8 Tag Zones

MARCH

4th Y3 Trip to MOTAT

4th Y6/7/8 Swimming Trials - Massey High

8th Y5/6 Tee Ball Zones

9th Y8 HPV Immunisation Talks

11th Y7/8 Softball Zones

25th Y6/7/8 Swimming Zones

26th Senior Athletics Day

30th Y8 Camp & Y7 Activity Week Meetings



Thank you to North Harbour Hockey for the fun hockey sessions delivered to our students this week.



Pet Doctors West Harbour

West Harbour Vet Clinic has joined the Pet Doctors national group of clinics. We have the same great team to care for your pets, but a new look!! Learn more about Pet Doctors at www.nzpetdoctors.co.nz

09 416 6388

77 Hobsonville Road

westharbour@nzpetdoctors.co.nz



WEST HARBOUR VET CLINIC

TERM 1 EXTRACURRICULAR ACTIVITY FEES

Y0/1 Team Scott	N/A
Y2 Team Ashford	N/A
Y3 Team Johnston	\$14.00
Y4 Team O'Reilly-Dodd	N/A
Y5 Team Moore	N/A
Y6 Team Oldham	\$22.00
Y7/8 Team Broadhurst	N/A



MUSIQHUB DEMO

MUSIQHUB, who run private guitar, bass & ukelele lessons, would like to invite parents to an open afternoon to see a demonstration of the instruments available for lessons and to talk to Jakub Roznawski about the programme.

Tuesday 2nd March from 2:30pm - 3:30pm in Room 27



LUNCH ORDERS

The Munch Box

Available three days this term Monday, Wednesday & Friday. Menus have been sent home and available on school website or Facebook page MVS Munch Box



UNIFORM ORDERS

A reminder Marina View School uniforms are now available to order online at <https://www.argyleonline.co.nz/shop/auckland/marina-view-school>. We will have a set of sizes here in the office for parents who wish to check sizing before ordering. We will also continue to sell MVS hats and caps at the school office, these are \$18 each.

CHANGE OF CONTACT DETAILS

If your child's contact details need updating with new contact phone numbers, address, or email address please email office@marinaview.school.nz so we can update our records.



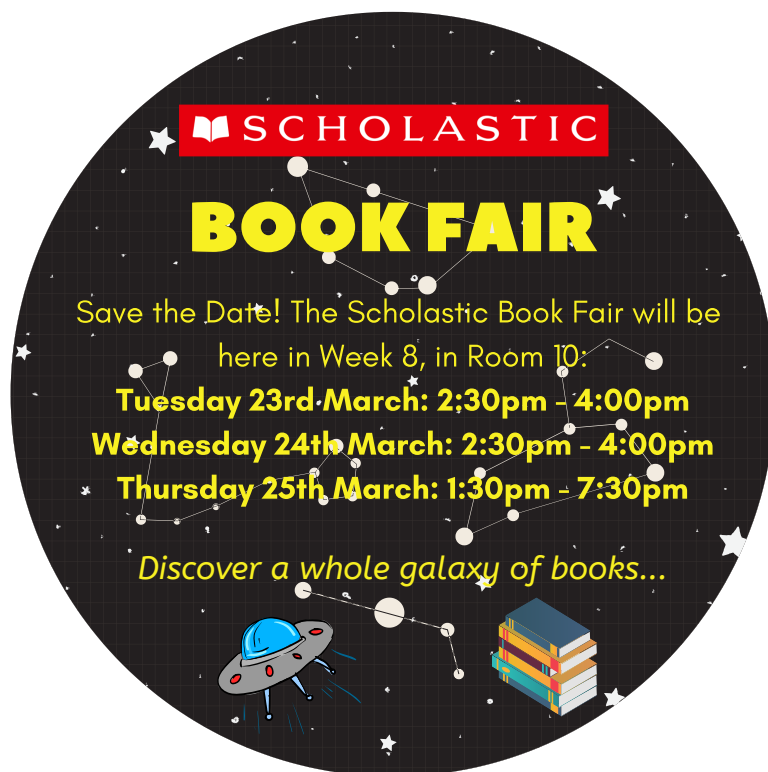
COMMUNITY NOTICES

HAND AND HAND EARLY LEARNING CENTRE

Options for full days, short days, sessions available.
44 Hobsonville Road, West Harbour. Open 7:30am - 6:00pm
Email hobsonville@handandhand.co.nz or Phone: 09 213 0576

CODING LESSONS FOR AGES 9-18

Learn coding languages to create technology. Export tutor online to help during lessons. 1 hour per week at 4pm, 5pm or 6pm weekdays. Try a free trial at codingnz.com



SCHOOL HATS

School hats are compulsory for Term 1. MVS Caps and bucket hats can be purchased online at <https://www.argyleonline.co.nz/shop/auckland/marina-view-school> or the office, and are \$18 each. Please ensure your child's hat is named clearly.

TIDY TECH KIWI

Bring in all your unused technology and all associated cables and chargers as part of the HP Tidy Teach Kiwi Programme.



TOTS TO TEENS MARCH ISSUE digital magazine is available here <http://issue2102nin.totstoteens.co.nz>

LUNCHTIME GAMES

A group of senior students have volunteered to be Games Monitors and will be running games at lunchtimes (weather permitting) between rooms 30 and 33.

Children in years 1, 2 and 3 will be invited to join in and learn a range of games. Many of the games are simple old fashioned games that don't require any equipment and will hopefully enable children to play them independently at other break times.

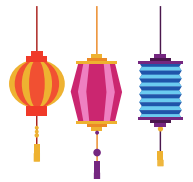
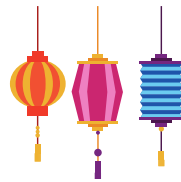
The games will have a limited number of participants so initially, teachers are being asked to invite children who might be a little shy or who might need a little encouragement to join in with others. They will be given places first, then any other children who would like to participate, may join in. Our Learning Support Coordinator Barb Jacka will be supervising for the first few weeks until the games monitors are confident in their roles.



YEAR 6 ART PROJECT

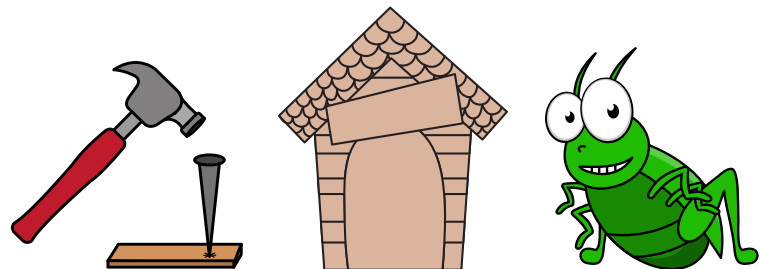
This term all of our Year 6 classes are participating in the National Children's Lantern Workshops and Competition as part of their ART learning.

This competition aims to inspire and cultivate children's creativity as this is one of the main pillars of the Wellington Lantern festival. This year's theme is New Zealand's endangered animals. The lantern designs depict nine different endangered animals from the Māui dolphin to the Powelliphanta snail. We hope that painting these designs along with the workshop video discussing the animal's habitats and conservation status will spark an interest or start a conversation about these wonderful animals. We look forward to seeing our students' wonderful creations!



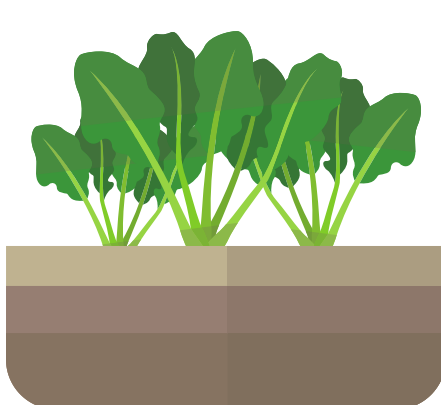
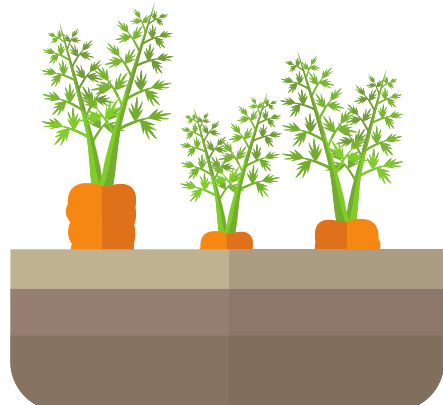
THE IMAGINEERS

The Imagineers have been busy making insect hotels for the gardens. Mr Young has even put one in his own garden to test it out. Thank you to Tim Clapson for helping the students with this project.



GARDEN TO TABLE

The Year 7 & 8 students took to the garden last week, spreading mulch over the gardens to stop the soil and plants from drying out too much in the hot weather. They also harvested some delicious juicy tomatoes. Our school also features in an article in the latest GTT newsletter about the holiday watering programme and we are lucky to have the Regional Coordinator Becks Callaher visit the school on 4th March to speak with the students.



Rachael Lelean
DIRECTOR
Rodney West Franchise for

G.J. Gardner. HOMES
New Zealand's favourite home builders

d (09) 412 2744 m (027) 412 8917
e rachael.lelean@gjgardner.co.nz

Matt Lelean
FRANCHISE OWNER
Rodney West Franchise for

G.J. Gardner. HOMES
New Zealand's most trusted home builder

d (09) 412 2741 m (027) 838 7128
e matt.lelean@gjgardner.co.nz

NZ MODERN SCHOOL OF MUSIC PIANO/ KEYBOARD LESSONS AT MARINA VIEW SCHOOL

LESSONS
Start from
\$20.00



Private Professional Tuition
Practical & Theory Exams
Competitions
Affordable
(Established 65 years)

PHONE 0800-696-874

www.modernmusic.co.nz



Kids K'Nnection

Before and After School Care
and Holiday Programmes

Spaces available for before and after school care. Onsite at Marina View School. To find out more information or to book contact Carol 021 832 181 or fill in an enrolment form online at www.kidsknection.com

MUSIQHUB

Music lessons at Marina View School

Would you like in-school music lessons with a professional Music Tutor with many years of teaching experience?

You can enrol your child in **guitar, ukulele or bass** lessons at MVS! We deliver a fun, engaging and structured curriculum. Students learn songs in styles ranging from traditional to contemporary, during school hours.

For more info and to register your interest please contact **Jakub** - jakub.roznawski@musiqhub.co.nz
02102420972

HURRY! LAST
FEW PLACES!

Realisticus
Art Academy Love to Draw

FANTASTIC Realistic Art Classes for Kids Ages 6-13 (TERM 1 2021)

LOCATION: ESOL Room, Marina View School

TUESDAY, THURSDAY, & FRIDAY

Book online now!
ArtAcademy.co.nz
Ph: 021 151 0115

E: maya@artacademy.co.nz

